



February 2021
Texas Chapter ISA TreEmail

A green poster for the 'Introduction To Entomology for Arborists Webinar Series'. The title is at the top in white. Below it, the dates and topics for five sessions are listed. Two speakers are featured with their photos and titles: Molly Keck and Laura Miller. Logos for the Texas Chapter ISA and Tree Clinic Pharmacy are also present, along with a registration link.

Introduction To Entomology for Arborists
Webinar Series

March 17, 2021 – Pesticide Laws and Regs Update
March 31, 2021 – Entomology 101 for Arborists
April 7, 2021 – Entomology 102 for Arborists
April 13, 2021 – Common Insects of Trees and Landscape Plants
April 21, 2021 – Integrated Pest Management

Molly Keck
Integrated Pest Management Program Specialist
Board Certified Entomologist
Texas A&M AgriLife Extension Service
Bexar County

Laura Miller
County Extension Agent
ISA Certified Arborist
Texas A&M AgriLife Extension Service
Tarrant County

Presented By
isa TEXAS Texas Chapter International Society of Arboriculture
Online Learning Series

Sponsored By
TREE CLINIC PHARMACY

Register at [ISATexas.com](https://www.ISATexas.com)

Register Today:
Introduction to Entomology for Arborist Webinar Series

Five Sessions - Noon to 1:00 PM
March 17, 31 and April 7, 13 and 21, 2021 (5 CEU's)
What's that bug and what's it doing to my tree?

Join Board Certified Entomologist, Molly Keck, for the Introduction to Entomology Webinar Series for Arborists. Over several noon meetings, you can gain a greater understanding of entomology, integrated pest management in the landscape and be able to identify common insect problems in the landscape. ***If you miss any sessions, don't worry, you will be able to watch or rewatch them all later whenever you want at your convenience.***

This series provides a foundation to understanding insects - sort of a 'bug bootcamp'. You will learn the basics of entomology. What is an insect versus other relatives? Who does the damage and in what part of their lifecycle? How do they feed? The series looks at specific species and delves into the specifics of where they lay eggs, the damage they cause, and what attracts them. The series ends with a look at Integrated Pest Management (IPM) of tree and landscape pests. By watching this webinar series, you will expand or reinforce your understanding of insects in the landscape. It provides a basis for understanding more in-depth presentations on emerald ash borers or other Insect problems.

Are you a certified pesticide applicator? By viewing this series and attending the "Laws and Regs" session presented by Laura Miller, Texas A&M AgriLife Extension Service horticulture agent in Tarrant County, you can acquire all 5 TDA CEUs that meet the annual requirement.

This ISAT Online Learning Series is sponsored by Tree Clinic Pharmacy

[Click here for more information on the Texas Chapter ISA Introduction to](#)



TRAQ Course and Assessment and TRAQ Renewal Live and In-Person

The Texas Chapter ISA is offering two ISA Tree Risk Assessment Qualification (TRAQ) courses and one Renewal class. TRAQ provides an opportunity for arborists to expand their knowledge through education and training in the fundamentals of tree risk assessment. This qualification promotes the safety of people and property by providing a standardized and systematic process for assessing tree risk. The results of a tree risk assessment can provide tree owners and risk managers with the information to make informed decisions to enhance tree benefits, health, and longevity.

Skip Kincaid will be your instructor covering Tree Biology and Mechanics, Tree Inspection and Assessment, Data Analysis and Risk Categorization, and Risk Reporting. The Tree Risk Assessment Qualification (TRAQ) Course prepares the participant to take the TRAQ assessment to become ISA Tree Risk Assessment Qualified.

We will follow all COVID safety procedures. These events fill quickly so register today!

[Click here for April 28-30, 2021 Dallas TRAQ information](#) - FULL (Workshop registration notices go to ISAT members before they are announced - [Join today!](#))

[Click here for May 4-6, 2021 San Antonio TRAQ information](#)

[Click here for May 3, 2021 San Antonio TRAQ Renewal information](#)

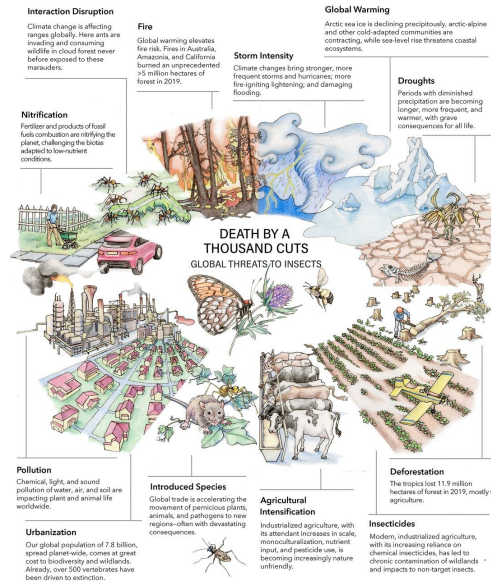


What's Up With Texas Trees?

February ISAT In the Shade Newsletter

In this edition of ISAT In the Shade, read about Dr. Appel and Sheila McBride's Tree Diagnosis Quiz Review, new Certification exam guidelines, a 2021 events update, a Member Spotlight on Sue Hoppe from Davey, the Houston Urban Forestry Awards, tree planting in Irving, overview of the ISAT Board retreat and, as always, What's the Big Idea.

[View the February In the Shade here](#)



Global Insect Decline!

"When we try to pick out anything by itself, we find it hitched to everything else in the Universe." J. Muir

Many of you 'seasoned' Texans have noticed that there are **alot** fewer bugs than just a few years ago. There are plenty of reasons for this, especially fire ants, but an 'insect apocalypse' or rapid decline of insects appears to be world-wide. So who cares? As prey, they are critical to the survival of other species. As herbivores, predators, and parasites, they aid in the distribution and abundance of plants and animals. As decomposers and consumers, they contribute to various nutrient systems. As pollinators, many flowering plants depend on them for reproduction. Insects have become essential in the consumer industry, as well as the medical and biological research fields.

What can you do? (from [Kawahra et al.](#))

1. Convert lawns to more natural habitats.
 2. Grow native plants.
 3. Reduce pesticide and herbicide use.
 4. Limit exterior lighting.
 5. Reduce soap runoff from outside washing.
 6. Report invasive species at [TexasInvasives.org](https://www.texasinvasives.org)
 7. **Register for the ISAT Introduction to Entomology for Arborist Webinar Series**[here](#)
-



Curtis Shoessow - Volunteer of the Month

I jumped into the climbing competition as a competitor first, then I started many years as a volunteer with the Texas Chapter ISA as well as with ISA, when the international competition came to San Antonio.

Although hard work, it is a high point for me to work with the Chapter volunteers to set up the Texas Tree Climbing Competition and then watch the successful event the following day. All that are associated with the climbing competition, from volunteers to climbers, are such a great group of people and it's always a fun time.

I have retired to my ranch outside Caldwell after a career with the City of College Station, Texas where I had to wear many hats in the care of trees. Presently, I enjoy working on the ranch as well as advising local senior citizens on trees. I have also set up a memorial tree planting program at our nearby community center. I'm looking forward to the next Texas Tree Climbing Competition in 2021!

(Note: ISAT is hoping to hold the 2021 Climbing Competition in May - Stay tuned for more news!)



Texas Tree Apps from the Texas A&M Forest Service

Use your magic rectangle (phone and tablet) for trees!

[My Tree ID Mobile App](#) - A mobile app that helps to identify tree species based on leaves, flowers, seed, bark or location using a key, descriptions, and image.

[TreeMD Mobile App](#) - A tree diagnosis tool that helps you get the root of the problem.

[Tree Risk Mobile App](#) - The Level 1 Tree Risk Assessment app helps perform a limited visual tree assessment.

[Trees Count Mobil App](#) - Trees Count is a mobile app for iOS and Android devices that allows users to inventory trees in communities.

Cool, but browser based:

[My City Trees](#): My City's Trees is an application that enables anyone to access Urban Forest Inventory and Analysis (FIA) data and produce custom analyses and reports.

[Texas Big Tree Registry](#): The Texas Big Tree Registry recognizes the largest known tree of each species

growing in the state. In some cases, these trees could be the largest in the country!

[Famous Trees of Texas](#): This story map represents the elite group of trees which have witnessed exciting events in Texas history

[Urban Tree Canopy](#): This displays predicted urban growth areas, UTC for selected communities, and models future UTC based on management policy.

[Map My Property](#): This provides landowners a quick and simple tool for making a map of their property that can be shared with others.

[Find all these here](#)



Forest Bathing Boosts Natural Killer Cell Function? Bathing suits optional!

Studies on the effects of “forest bathing,” a traditional practice in Japan of visiting a forest and breathing its air, have found it “can induce...significant increase[s] in the number and activity of natural killer cells” that can last for as long as a month. And, because natural killer cells are one of the ways your body fights cancer (by killing off tumor cells), the findings suggest that forest visits “may have a preventive effect on cancer generation and progression.” Okay, but how? “Why did the forest environment increase...natural killer cell activity?” What is it about the forest environment?

One thought is that the boost may be related to a reduction in stress. If you measure the amount of adrenaline flowing through people’s systems, did hanging out in a forest—but not a city—drop adrenaline levels down? Yes; so that checks out, but drip some adrenaline on human blood cells in a petri dish, and there does not appear to be any effect. The stress hormone cortisol, on the other hand, dramatically suppresses natural killer cell activity. So, maybe the forest led to less stress; less cortisol, which released the natural killer cells under its thumb—and you get the big boost?

[Forest Bathing boosts Killer Cells \(Video 4:52\)](#)

[Boosting Anticancer Immunity with Forest Bathing \(Video 5:20\)](#)

[Sign up for a short daily nutrition update video from Dr. Greger MD](#)



10 Important Small Business Resources to Help You Survive the Coronavirus Pandemic

Millions of small businesses in the U.S. are having to navigate new issues like never before. The Coronavirus pandemic is creating significant disruptions to both supply chains and demand. The impact of this outbreak will most likely last for months, but there are plenty of small business resources you can turn to for business management support.

[Here are some small business resources for you to consider](#)



Fostering Thriving and Equitable Communities through Healthy Urban and Community Forests

Letter to the new Administration

A letter with recommendations from urban and community forestry practitioners and stakeholder was recently sent to the Biden Administration. It notes that urban forests and trees are key to many of the priorities of the incoming administration. It outlines UCF benefits and reminds that by 2050, 90% of Americans will be living in urban areas and investing in healthy urban forests and trees improves the health, livability and quality of life for residents.

[Read the recommendations here](#)



Immortality?

Ginkgo biloba has survived for 200 million years

Richard Dixon, a University of North Texas biologist is looking into the secrets of ginkgo longevity and has found some interesting results. He and his colleagues found that the cells in the vascular cambium **never grow old**. “Ginkgo trees have a very robust defense system built in and the system doesn’t wear out,” he said. “We examined 700-year-old trees and found they still expressed the same strong defenses as 20-year-old trees. These defenses are both active, allowing the tree to respond to conditions, and passive, having pre-built chemical barriers.” Dixon noted, “Fortunately for us, the genome of the *Ginkgo biloba* had been sequenced. Using that information along with RNA sequencing we were able to identify the genes and genetic pathways for the individual functions that make up the systems that keep the tree alive for so long. There is still more work to be done, but right now we have taken a great step forward in our research.”

Who would have guessed a year ago that tens of millions of people would be eagerly lining up for injections of

a live genetically modified chimpanzee virus to fight the COVID-19 global pandemic? Who knows, maybe in the not too distant future, tree cell immortality findings may find their way into human health applications.

[UNT scientist helps discover secret of longevity in thousand-year-old trees](#)

ISAT is looking for an Assistant Editor to help produce the ISAT In the Shade newsletter. This is a paid position. If you have design and layout skills, please contact John at JPG@isatexas.com



News from ISA International

Read the letter from ISA and TCIA concerning designating tree care workers as essential critical infrastructure workforce for priority in vaccination [here](#).

2021 International Tree Climbing Competition Update

With the uncertainty of future shut downs, and the continuation of travel and meeting restrictions globally ISA made the decision to not hold the 2021 International Tree Climbing Competition (ITCC). The safety of our members, competitors, volunteers, and team members remain our priority. [The next ITCC will be held in September of 2022 in Copenhagen, Denmark.](#)

Credential Extensions Granted

On November 13, 2020 ISA announced that given the limitations imposed throughout the world by the current global pandemic and CEU-related data captured between March and October 2020, it is clear the difficult scenario created for our local Continuing Education Providers, ISA Qualification Hosts, and consequently ISA credential holders who need to maintain an ISA certification and/or qualification. We have looked at the different scenarios and data available and the following will be implemented to support ISA credential holders during this global pandemic:

ISA Certification Holders with a certificate set to expire on December 31, 2020 will receive a complimentary extension until April 29, 2021 to meet the requirements to renew their certification(s).*

ISA Tree Risk Assessment Qualification (ISA TRAQ) credential holders with an expiration date set within December 31, 2020 and June 29, 2021 will receive an extension until June 30, 2021 to renew their ISA TRAQ credential.

See [ISA FAQ](#) for more information.

Guide for Plant Appraisal, 10th Edition Now Available

The International Society of Arboriculture (ISA), on behalf of the Council of Tree & Landscape Appraisers, announces the release of the **Guide for Plant Appraisal, 10th Edition**, Revised in digital format. The digital version of the Guide is now available for purchase on ISA Store. With its release in digital format, the CTLA now provides another way for readers to access this material. For those that have purchased previous versions of the Guide, the CTLA is offering a discounted price of \$30.00 on the purchase of the digital version of the book through 28 February. See it in the [ISA Store](#).

Tree Climbers' Guide, 4th Edition Now Available

The Tree Climbers' Guide was written specifically from the tree climbers' perspective to learn safe climbing and aerial tree work principles. It is a basic text for tree climbers as well as a study guide for the ISA Certified Tree Worker Climber Specialist® and Aerial Lift Specialist® exams. Each chapter includes a list of key terms and concludes with a workbook section. The fourth edition has been updated throughout and features more than 270 illustrations by artist Bryan Kotwica that help to clarify and complement the text. [Click here](#)

Calendar of Events

Members receive notice of events before non-members. [Don't miss out - join today!](#)

February

- Feb. 12: ISA Certified Arborist, Municipal, Utility Exam. Round Rock (Filled)

March:

- March 17: [Introduction to Entomology Webinar Series - Session 1: Pesticides - Laws and Regulation Update - with Laura Miller](#)
- March 31: [Introduction to Entomology Webinar Series - Session 2: Entomology 101 for Arborists - with Molly Keck](#)

April

- April 7: [Introduction to Entomology Webinar Series - Session 3: Entomology 102 for Arborists - with Molly Keck](#)
- April 14: [Introduction to Entomology Webinar Series - Session 4: Common Insects of Trees and Landscape Plants - with Molly Keck](#)
- April 21: [Introduction to Entomology Webinar Series - Session 5: Integrated Pest Management - with Molly Keck](#)
- April 28-30: [ISA Tree Risk Assessment Qualification \(TRAQ\) – DFW](#) (Sold out)

May:

- May 3: [TRAQ Course and Assessment - Renewal, San Antonio](#)
- May 4-6: [TRAQ Course and Assessment, San Antonio](#)
- May 20-21: Oak Wilt Qualification Course and Assessment, Glen Rose (Registration will open soon and members will be notified first - [Join Today!](#))
- May 20: Oak Wilt Qualification Course and Assessment - Virtual (Registration will open soon and members will be notified first - [Join Today!](#))
- May ? : Texas Tree Climbing Championship - Date and Location TBA

June:

- June 9: Oak Wilt Qualification Course and Assessment - Field Day for May 20th virtual candidates only (Registration will open soon and members will be notified first - [Join Today!](#))
- June 10-11: Oak Wilt Qualification Course and Assessment, Fredericksburg (Registration will open soon and members will be notified first - [Join Today!](#))

September:

- Sept. 29 to Oct. 1: Texas Tree Conference, Academy, School and Trade Show. Waco Convention Center



Not a Texas Chapter ISA Member?
[Click Here](#)

Texas Chapter ISA | 979.324.1929 | www.ISATexas.com

