



Texas Chapter
International Society
of Arboriculture

September 2020
Texas Chapter ISA TreEmail



The Texas Tree Conference & Academy Goes Virtual!
Starts October 7th, 2020
Sign up now and save with Early Bird registration
The first 200 to register will get a bag of tree swag in the mail!

Join your fellow arborists online for the Virtual Edition of the Texas Tree Conference and Academy!

Earn your CEU's with an outstanding lineup of top speakers - and don't worry that the technology will be hard to use.

The Virtual Texas Tree Conference and Academy will be presented with real time speakers in 2-3 hour segments spread over several weeks. And in case you can't make one of the segments, each segment will be recorded and available online later when you want to watch.

See you online!

[Click Here For More Information On The Virtual Tree Conference](#)

[Vendors click here for sponsorship information](#)



ISAT In the Shade Check out the latest edition

Check out the latest ISAT In the Shade newsletter to read about the upcoming Texas Tree Conference, invasive exotics, a retrospective on Texas Tree Climbing Championship, the Member Spotlight on Sarah Sours, the draft Texas Forest Action Plan, the the Big IDea.

[Click here to view the online version of ISAT In the Shade](#)



Texas Chapter ISA Elections Check your email for the link

Deadline to vote is midnight, September 9, 2020

Texas Chapter members who are also ISA members have all received a link to vote for the 2019-2020 Board of Directors.

If you have not received an email from ISA with the link for online voting, check your spam folder or, if you need a paper copy of the ballot mailed to you, email John at jpg@isatexas.com.



ISAT Volunteer Spotlight
A.J. Thibodeaux
CEO and Co-Owner
Preservation Tree Service, Inc.

My career in the tree care industry began in September 1983. Shortly after returning from Basic Training in the USMC Reserves, I took a position as a ground worker on a line clearance tree crew with a company my father was employed by for over 30 years. With his many years of experience in the utility line clearance industry at my disposal, I was able to learn quickly and advance through many different positions over the next 5 or 6 years. Utility line clearance tree care companies were very active in the ISA Texas Chapter at this time and my manager suggested that I join, so I did. I had no idea at the time of the tremendous impact joining the ISA Texas Chapter would have on the course of my now 37-year career. ISA introduced me to a world of industry related career paths I did not know existed.

Early on I began volunteering to help with the Texas Tree Climbing Championship, known back then as the "Texas Tree Climbing Jamboree". I assisted with event setup, take down, etc. As my knowledge and skill improved, I was asked to help judge events and have been doing so off and on ever since. In the late 80's/early 90's an associate nominated me to serve on the Board of Directors. I accepted the nomination and much to my surprise, I won the election and went on to served four two-year terms. In 2018, I was again nominated by an associate to serve on the ISA Texas Chapter Executive Committee as Vice President, and well, here I am ISA Texas Chapter President-Elect 2020. My passion for the tree care industry and ISA stems from a belief in who I am and not what I do. In all the years I have been involved with ISA I have never met anyone that wasn't willing to go above and beyond to help me be better at what I do, challenge me to learn more and support me every step of the way. I volunteer to give back, because without ISA, I would have never made it to where I am today!

A.J. is also the Chair of the 2020 Texas Tree Conference! Want to grow in your profession? Volunteer with ISAT. Email Misti at misti@isatexas.com for more information. You can make a difference too!



Calling All Arborists!!!
You can help TFS hunt down this invasive species

The **emerald ash borer** (*Agrilus planipennis*) is a destructive non-native wood-boring pest of ash trees (*Fraxinus* spp.). Native to Asia, the emerald ash borer beetle (**EAB**) was unknown in North America until its discovery in southeast Michigan in 2002. Since then, the invasive pest has spread to 35 states including Texas. EAB is responsible for killing millions of ash trees across much of the country.

Symptoms of an infestation may include any or all of the following: dead branches near the top of a tree, leafy shoots sprouting from the trunk, bark splits exposing larval galleries, extensive woodpecker activity, and D-shaped exit holes. EAB is a significant threat to urban, suburban, and rural forests as it kills both stressed and healthy ash trees. EAB is very aggressive and ash trees may die within two or three years after they become infested.

If you see the beetle or the exit holes, contact TFS.

You can learn more about EAB in Texas and the latest treatments at the Texas Tree Conference in October - [**Register Today!**](#)



President Trump Signs the Great American Outdoor Act The environment and our parks win bigly

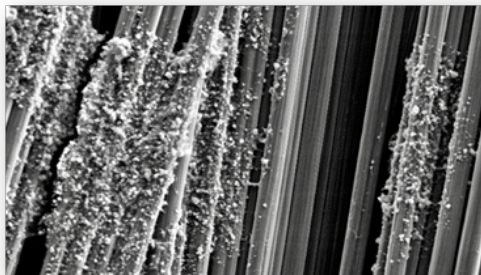
The President has signed the highly anticipated Great American Outdoors Act. This legislation has been supported by industry organizations, professionals, and associations since it was initially proposed. The Great American Outdoors Act helps provided funding and support for environmental areas across the country, including the National Parks, which required approximately \$16 billion of collective maintenance. Additionally, the Land and Water Conservation Fund (LWCF) will be permanently and fully funded.

President Trump commented on the importance and impact of the bill in saying, "We're here today to celebrate the passage of truly landmark legislation that will preserve America's majestic natural wonders, priceless historic treasures... grand national monuments, and glorious national parks. This is a very big deal, and from an environmental standpoint, and just from a beauty of our country standpoint, there hasn't been anything like this since Teddy Roosevelt."

[Read more about this Act here](#)

[More here about the President's One Trillion Tree initiative](#)

And more from Washington: In July, the House passed the [Interior Appropriations Bill](#), which included \$40 million for the U.S. Forest Service Urban and Community Forestry program, an \$8 million increase over the current fiscal year. Of those funds, \$2 million was allocated for reforestation efforts in urban communities most severely impacted by the Emerald Ash Borer.



Cellular nanocrystals from recycled wood waste make carbon-fiber composites tougher Did the Aggies find a new use for all our wood chips?

Polymers reinforced with ultra-fine strands of carbon fibers epitomize composite materials that are "light as a feather and strong as steel," earning them versatile applications across several industries. Adding materials called carbon nanotubes can further enhance the composites' functionality. But the chemical processes used

for incorporating carbon nanotube end up spreading them unevenly on the composites, limiting the strength and other useful qualities that can be ultimately achieved.

In a new study, Texas A&M University researchers have used a natural plant product, called cellulose nanocrystals, to pin and coat carbon nanotubes uniformly onto the carbon-fiber composites. The researchers said their prescribed method is quicker than conventional methods and also allows the designing of carbon-fiber composites from the nanoscale.

[Read more here](#)



Why are Plants Green? A new model for photosynthesis

From large trees in the Amazon jungle to houseplants to seaweed in the ocean, green is the color that reigns over the plant kingdom. Why green—and not blue or magenta or gray? The simple answer is that although plants absorb almost all the photons in the red and blue regions of the light spectrum, they absorb only about 90 percent of the green photons. If they absorbed more, they would look black to our eyes. Plants are green because the small amount of light they reflect is that color.

But that seems unsatisfyingly wasteful, because most of the energy that the sun radiates is in the green part of the spectrum. When pressed to explain further, biologists have sometimes suggested that the green light might be too powerful for plants to use without harm, but the reason why hasn't been clear. Even after decades of molecular research on the light-harvesting machinery in plants, scientists could not establish a detailed rationale for plants' color.

[Read more here](#)



News from ISA International

COVID-19 Update for Credential Holders with Pending Expiration Dates

TRAQ credential holders with expiration dates from June 1 to September 30 have received a three-month extension. Communications have been sent directly to credential holders from the ISA Credentialing Services Department, and the most current information is available [here](#).

NOW AVAILABLE: The new BCMA Guide for Exam Preparation publication by Sharon J. Lilly is available for purchase at the ISA Store [here](#). The BCMA Guide for Exam Preparation is designed to help candidates study for the ISA Board Certified Master Arborist® (BCMA™) certification.

NEW! [Safety Standards from Around the World:](#) This new resource for members was compiled as part of the study "Arboricultural Safety around the World." Through online searches and correspondence with ISA

component representatives, the authors compiled links to existing standards, organized them according to their respective countries and identified different types of standards. This research was supported, in part, by the TREE Fund's "Safe Arborist Techniques Fund" and the University of Massachusetts - Amherst.

The updated [Introduction to Arboriculture](#) online courses are now available.

The audio CD version of The Arborist' Guide to Certification has been replaced with [downloadable MP3 version](#). The CD/book combo has been removed from inventory.

NEW! [Z133 Online Training](#) is an introductory course that describes the history of the U.S.'s ANSI Z133 Safety Requirements for Arboriculture Operations and gives key information about the most common incidents in arboriculture operations which cause worker injuries and fatalities. The course consists of 7 modules: Arborist Essentials, Arborist Fundamentals, Struck By Falling Tree and Branches, Struck By Chainsaw, Struck By (Caught In) Chipper, Falls: (Climber and Aerial Lift Devices) and Electrical Contact.

Tree Climbing Championship rules: Due to some recent developments, the approved list of mechanical devices for ISA tree climbing competitions has been updated by the ISA TCC Rules Committee. [View the changes here](#).

Trees Are Good is an educational website providing homeowners and other tree owners with reliable information regarding the benefits of trees and how to properly care for trees in an urban environment. Share these resources about basic tree care with your community and customers to help them to make informed decisions when hiring tree care providers.

- [Planting a Tree](#)
- [Pruning Trees](#)



[Not a Texas Chapter ISA Member?](#)

[Click Here](#)

Texas Chapter ISA | 979.324.1929 | www.ISATexas.com

