

ARBORISTS AND WILDFIRE PREPAREDNESS



Kari Hines: Firewise Coordinator



Tree Protection

- Lightning
- Erosion
- Drought
- Insects
- Diseases

Why not wildfire too?

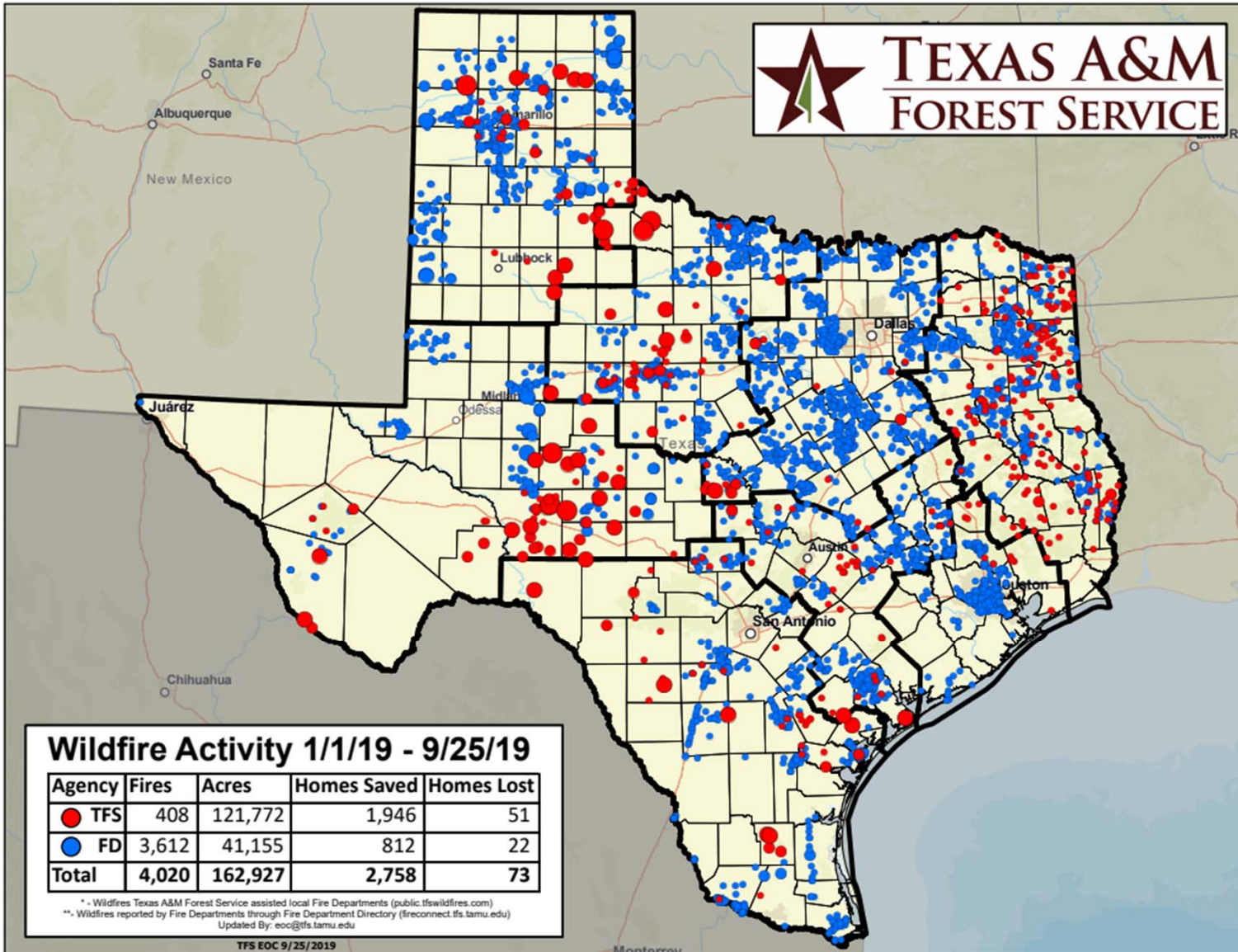


Wildfire in Texas

- Wildfire is a natural part of almost all Texas ecosystems
- Many Texas residents do not realize that previous suppression have throw the environment out of balance, increasing the chance of catastrophic wildfires.



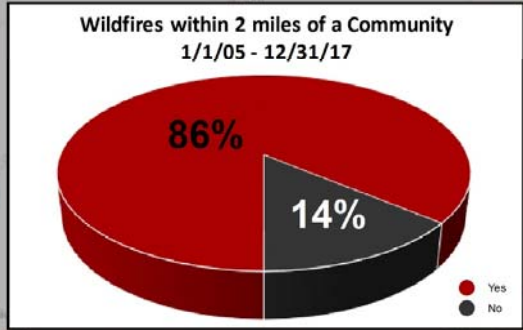
TEXAS A&M
FOREST SERVICE



WILDFIRES WITHIN 2 MILES OF A COMMUNITY

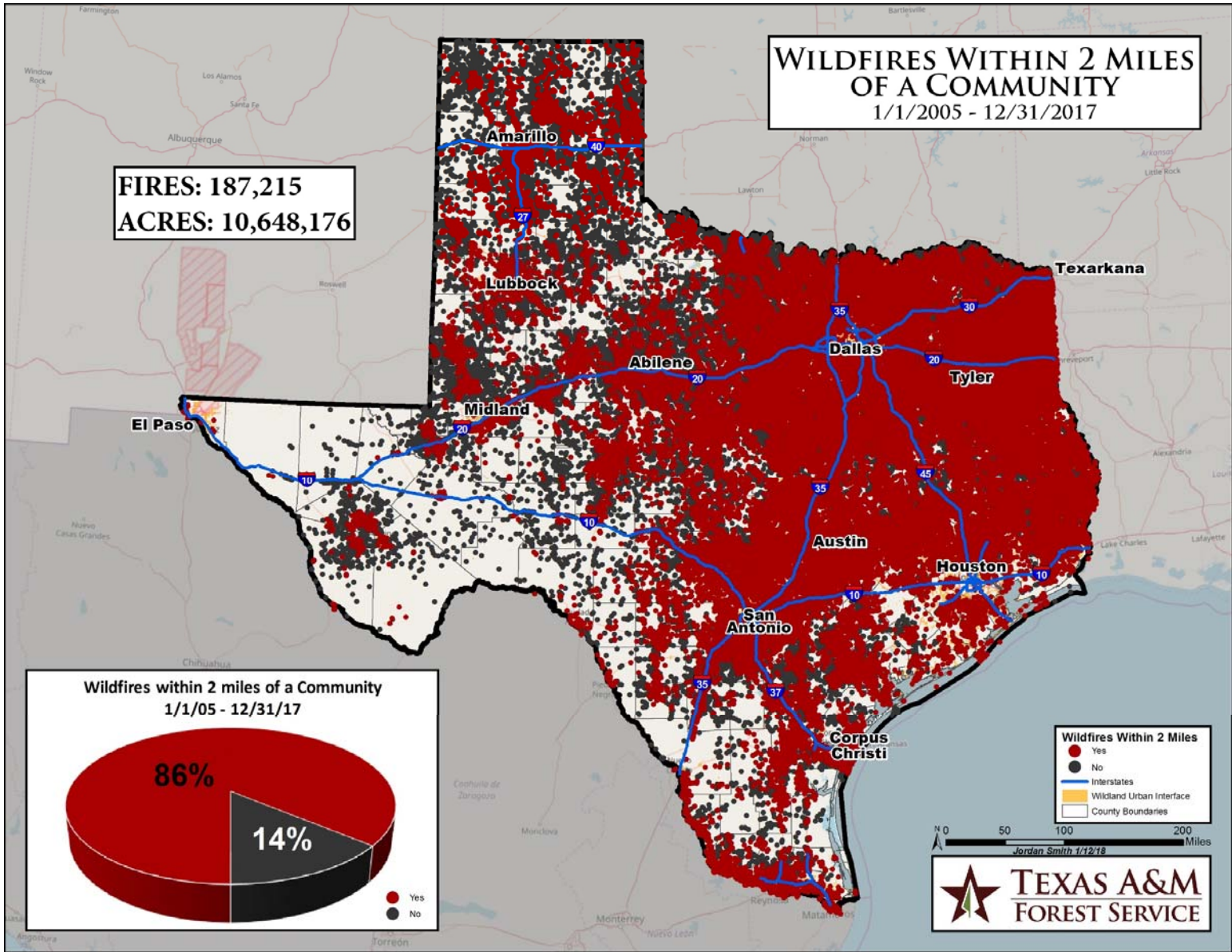
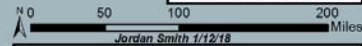
1/1/2005 - 12/31/2017

FIRES: 187,215
ACRES: 10,648,176



Wildfires Within 2 Miles

- Yes
- No
- Interstates
- Wildland Urban Interface
- County Boundaries





So, What's the Problem?

6



★ Ignition Causes

7

- Humans cause over 90% of the wildfire in Texas
- Burn piles and debris burning is the #1 source of human caused wildfire

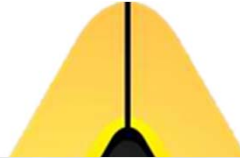




Wildfire

101

★ The Fire Triangles





The Fire Triangles

Topography

- Flat or slopes
- Aspect



Weather

- Wind
- Temperature
- Relative Humidity
- Precipitation

Fuel

- Fine or Heavy
- Arrangement & continuity
- Fuel Moisture



What Is The Wildland Urban Interface?

11

Formal definition of WUI:

“A geographic area where formerly urban structures, primarily homes, are built in immediate proximity to naturally occurring flammable fuels.”



Where human habitat
meets wildlife habitat

★ Classic WUI

12

Where subdivisions or urban neighborhoods occur adjacent to rural or wildland areas





Intermix WUI

13

Homes, farms, ranches and resort areas scattered in the rural areas and wildlands



Land that is undergoing a transition from agricultural, forest or rangeland uses to urban land uses

★ Occluded WUI

14

Wildland that lie within a larger developed area such as parks, forests, greenbelts and other recreational areas



Publication Details

High wildfire damage in interface communities in California

Kramer, Heather Anu; [Mockrin, Miranda H.](#); Alexandre, Patricia M.; Radeloff, Volker C.

Year Published

2019

Publication


International Journal of Wildland Fire

Abstract

Globally, and in the US, wildfires pose increasing risk to people and their homes. Wildfire management assumes that buildings burn primarily in the wildland–urban interface (WUI), where homes are either ignited directly (especially in intermix WUI areas, where houses and wildland fuels intermingle), or via firebrands, the main threat to buildings in the interface WUI (areas with minimal wildland fuel, yet close to dense wildland vegetation). However, even urban areas can succumb to wildfires. We examined where wildfire damages occur among urban, rural and WUI (intermix and interface) areas for approximately three decades in California (1985–2013). We found that interface WUI contained 50% of buildings destroyed by wildfire, whereas intermix WUI contained only 32%. The proportion of buildings destroyed by fires among classes was similar, though highest in interface WUI areas (15.6%). Our results demonstrate that the interface WUI is where most buildings were destroyed in California, despite less wildland fuel. Continued advancement of models, mitigation and regulations tailored for the interface WUI, both for California and elsewhere, will complement the prior focus on the intermix WUI.

Publication Toolbox

 [Download PDF](#) (821.0 KB)

 This publication is available **only** online.



Methods of Ignition

16

Radiant Heat
Flame Impingement
Embers



Radiant Heat

17





Flame Impingement

18

Flame fronts move through vegetation or objects that contact combustible materials (deck supports, vegetation, etc.).



The ignition of these materials can lead to the burning of the structure.

★ Embers

19

An ember shower can start 30 minutes or more before the fire and can be sustained for two hours or more after the fire has passed.





Usually, trees don't burn down homes, it's the homes that burn down trees.





Protecting Landscapes Protects Urban Forests



A Healthy Landscape is a Fire Resistant Landscape





Preventing Ecosystem Loss

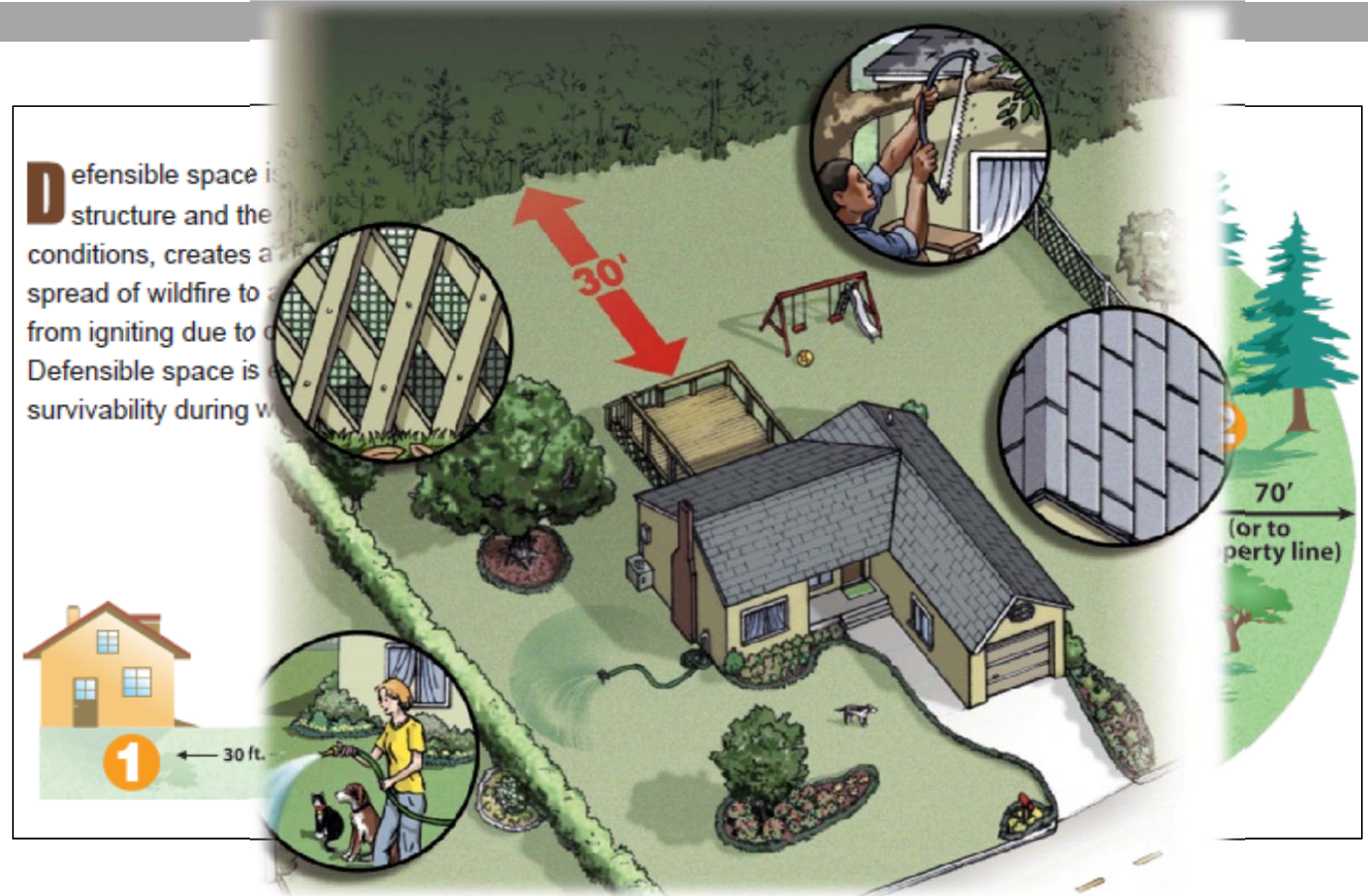
- ❑ Mulching
- ❑ Prescribed Fire
- ❑ Hand Thinning
- ❑ Mowing
- ❑ And More!






Preventing Home Loss

- Three Keys of Risk Reduction
 1. Defensible Space
 2. Fire-Resistant Landscaping
 3. Home Hardening




Marketing



woodchuck Tree Service

CALL US: 970-403-5647
10 Town Plz Durango CO 81301 | woodchuckdan@gmail.com

HOME ARBORIST SERVICES FIRE MITIGATION TREE SPRAYING CONTACT US

FIND US ON: 

Professional Wildfire Mitigation Service For Durango Colorado And The Four Corners



Woodchuck Tree Service offers **wildfire mitigation** done professionally by a crew led by ISA Certified Arborists. Creating defensible space does not mean clear cutting around your home. It entails managing trees, brush, or other vegetation to slow the spread of fire while maintaining the beauty of your forest.



PROTECT YOUR HOME & FAMILY FROM FOREST FIRES

While the Colorado foothills west of Denver are a beautiful place to live, the area is unfortunately prone to devastating wildfires. For that reason, fire mitigation is one of the most important and effective ways to protect yourself, your family and your home from the risk of catastrophic damage in a forest fire.

WHAT IS WILDFIRE MITIGATION?

Wildfire mitigation allows you to minimize the destructive effects a wildfire has on your property by creating a **defensible space** around your home and modifying the home's construction (for example, the materials used to build your house). Defensible space is the area around your house where the vegetation, including shrubs and trees, has been modified or removed to reduce the intensity of a wildfire and slow its spread.

FIRE MITIGATION SERVICES FROM LAM TREE SERVICE

Our tree care professionals focus on reducing the amount of combustible plant fuels around your property to create a defensible space.

We focus on three levels of potential threats to your property:

GET A FREE QUOTE

Call us at 303-674-8733 or contact us online to get a free estimate for Fire Mitigation or a firewise landscaping consultation.

REQUEST AN ESTIMATE

FIRE MITIGATION RESOURCES

For more details about creating a fire resistant landscape to prevent or reduce wildfire damage to your home, [check out our Firewise Landscaping Resource page.](#)

[Consumer Advisory](#) from the Colorado Department of Regulatory Agencies.



Not Just for Commercial Arborists

About 2,310,000 results (0.52 seconds)

Top stories



PG&E shut off power to 48,200 customers in northern California because of wildfire risk

CNN.com

14 hours ago



California utility cuts off power to thousands amid wildfire threat

The Guardian

1 day ago



California wildfires: Cell companies can't promise indefinite service

San Francisco Chronicle

1 day ago

→ More for utility companies wildfires

California utility cuts off power to thousands amid wildfire threat

<https://www.theguardian.com> › us-news › sep › california-utility-power-cu... ▼

1 day ago - Thousands of people in northern California woke up on Tuesday without electricity after the utility company Pacific Gas & Electric cut power to ...

PG&E settles with insurance companies for \$11 billion in ...

<https://www.cnn.com> › 2019/09/13 › pge-california-wildfires-settlement

Sep 13, 2019 - (CNN) Pacific Gas & Electric (PG&E) announced it has reached an \$11 billion settlement with insurance companies to resolve a long-running dispute over wildfire damage.

Texas Wildfire Mitigation Project | Reducing the risk of ...

<https://wildfiremitigation.tees.tamu.edu> ▼

More than 4,000 power line-caused wildfires have occurred in Texas in the past three and ... Utility company commitments are being formalized, in anticipation of ...

People also ask

Can power lines cause fires? ▼

Why do power lines cause fires? ▼

How do downed power lines cause fires? ▼

Feedback

Texas A&M Technology Helps Electric Providers Detect Faults ...

<https://today.tamu.edu> › 2018/09/04 › texas-am-technology-helps-electric-... ▼

Sep 4, 2018 - Vegetation on electric lines can cause flashovers such as this one. Flashovers like these often ignite wildfires. (Texas A&M Engineering).

Texas A&M technology helps electric providers detect faults ...

<https://tees.tamu.edu> › news › 2018/09/04 › texas-am-technology-helps-ele... ▼

Texas A&M technology helps electric providers detect faults, prevent wildfires. September 4, 2018. | By: Aubrey Bloom. When your power goes out, you probably ...

The Link Between Power Lines and Wildfires | Electrical ...

<https://www.ecmag.com> › section › systems › link-between-power-lines-an... ▼

Record-breaking wildfires have erupted as a result of the unprecedented ... While the California Public Utilities Commission (CPUC) estimates only about 10 ...

Missing: texas | Must include: texas

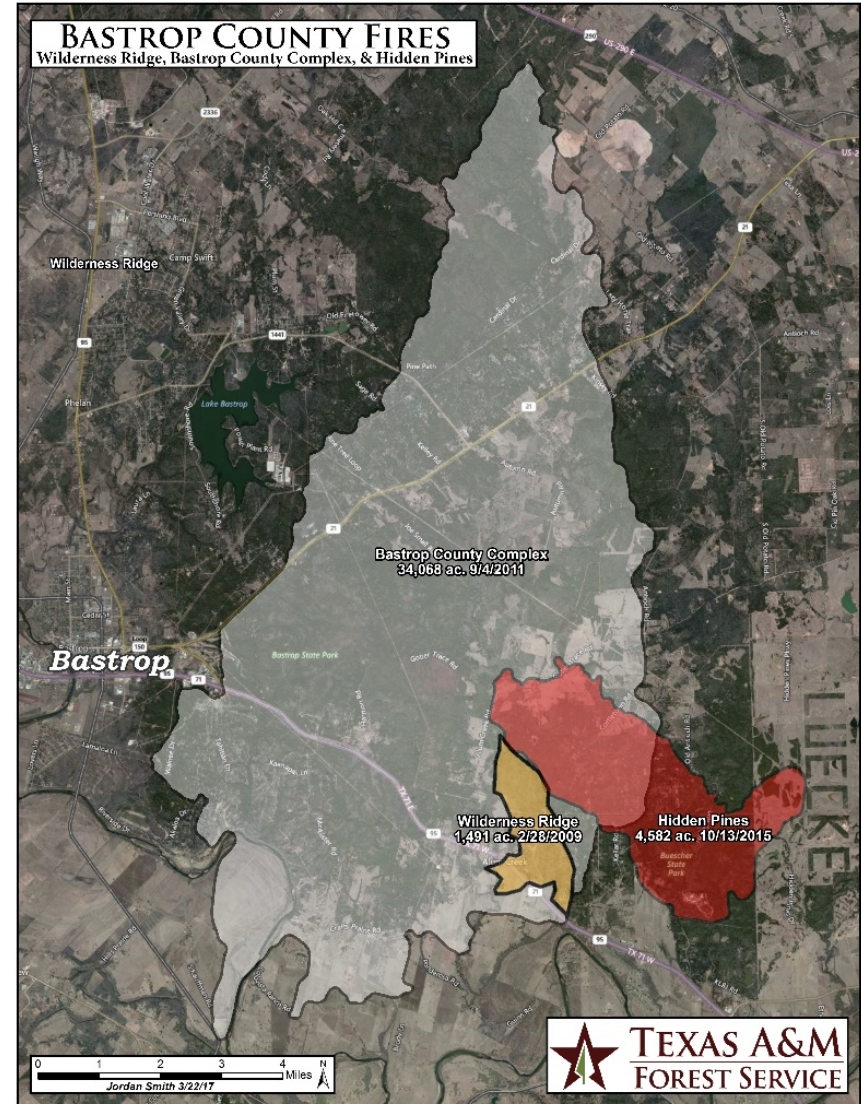
How Wildfires Have Sparked Change In The Power Industry ...

<https://theonebrief.com> › how-wildfires-have-sparked-change-in-the-powe... ▼

And power companies are especially vulnerable and exposed to this peril. Recent years have



Not Just for Commercial Arborists





What Do You Get Out of the WRRQ Course?

- Course taught by experienced professionals
- Take a peak into the world on how wildfires burn and how you can help your community by becoming a “pre- first responder”
- Be included on a public list of fellow arborists who are WRRQ qualified

Thank you!

Any questions?