

Texas Tree Ordinance Workshop

Round Rock, Texas



Michael Embesi – City of Austin
Watershed Protection & Development Review Department


October 4, 2006

City of Austin Web Site - www.ci.austin.tx.us/trees/


City of Austin - Urban Forestry Tree Preservation and Replenishment - Microsoft Internet Explorer

File Edit View Favorites Tools Help

Address <http://www.ci.austin.tx.us/trees/> Go Links



Urban Forestry Tree Preservation & Replenishment



Watershed Protection Development Review

[Home](#) [Regulations](#) [Encyclopedia](#) [Programs](#) [FAQs](#) [Links](#)

Overview ([Página en Español](#))

Visitors and residents new to Austin are universally surprised at the extensive woodlands and pocket forests which occupy the region. UT Baseball coaching legend Augie Garrido proclaims Austin "The oak tree capitol of Texas." In 1983 the City Council adopted one of the most progressive Tree Ordinances in the country. [The Tree and Natural Area Protection Code](#) is based on the fundamental precepts of sound urban forest management; diversification, preservation, and replenishment. Proposed developments are reviewed to assure that a final product is achieved which results in a diversified and sustainable urban forest. [City requirements](#) are designed to achieve a balance of re-forestation and preservation, frequently emphasizing one of the two elements to achieve the best long-term benefit for the community. Trees 8 inches in diameter and larger are scrutinized for preservation potential, trees 19 inches and larger are classified as "protected sized trees" which receive enhanced evaluation for preservation. Austin-ites recognize that trees are valuable in economic, aesthetic, and environmental sustainability of the region.

City of Austin Arborist Assisting with Development and Tree Preservation Issues

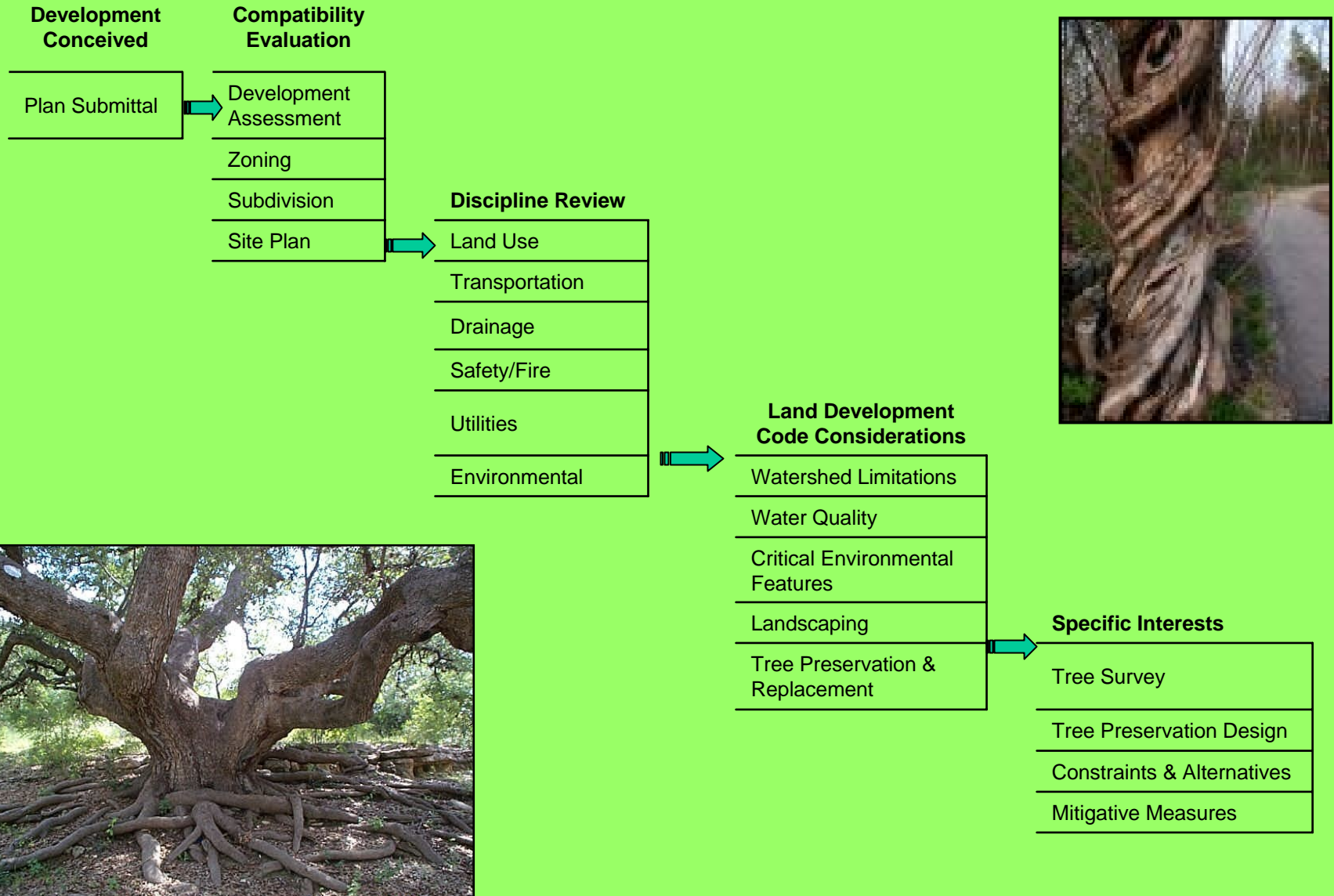
[Michael Embesi](#) (512) 974-1876
505 Barton Springs Road, 4th Floor
Austin, TX 78704

Problems with Trees

You may have a specific tree concern and wonder if the City will assist you with this matter. There are multiple tree-related concerns that will determine if the City can assist you. Are limbs hampering traffic flow? Is a fallen tree clogging a waterway? Has a tree fallen on utility lines? Is a tree blocking the alley? Is a tree creating a blind spot at an intersection? The following list helps to identify whom to contact about your specific tree maintenance issues:

Power lines and street lamps	Austin Energy	494-9400
Streets, right-of-ways, and sidewalks	Parks and Recreation Department	3-1-1
Alleys	Public Works - Street & Bridge Division	3-1-1
Creeks and stream banks	Watershed Protection - Field Operations	3-1-1

Commercial Development Process

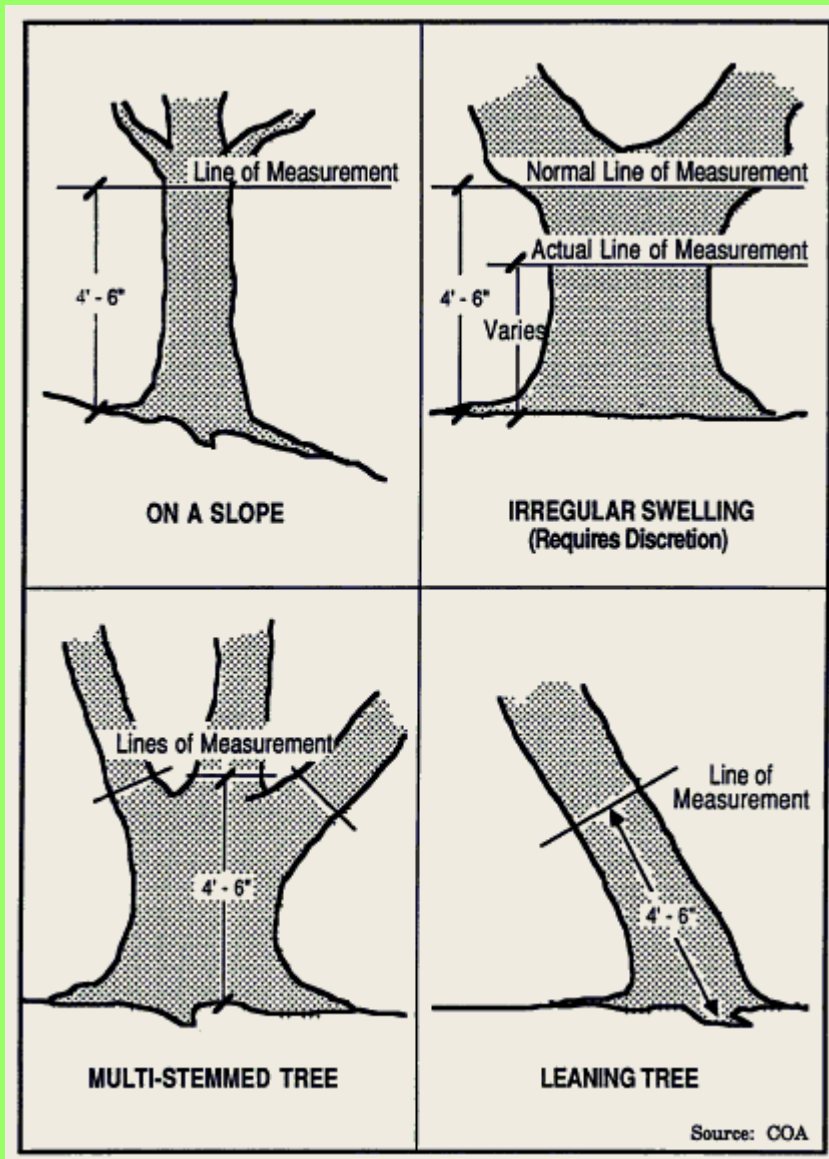


Protected-Size Trees

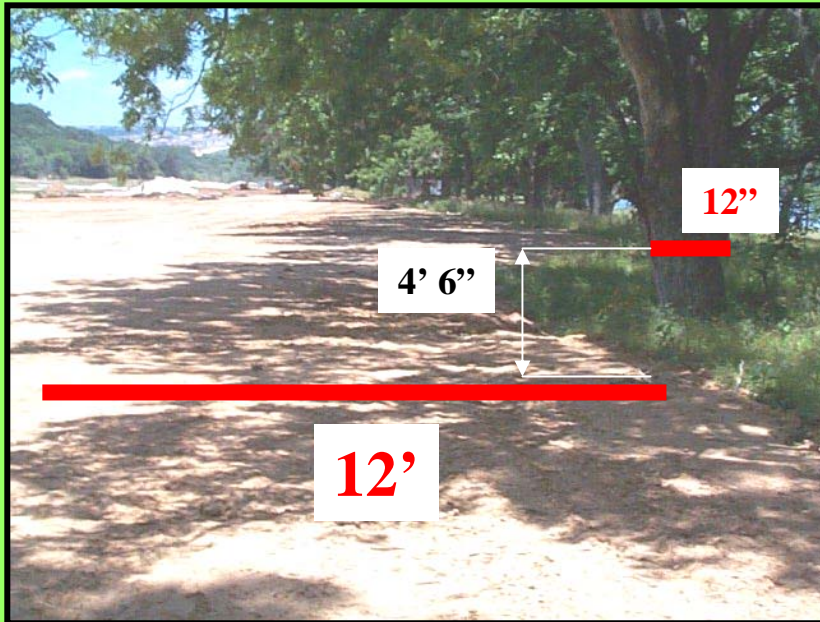


- 19-inch DBH at 4½ feet above grade
- The ordinance applies to areas within the City limits and does not differ between species of trees
- The ordinance applies to proposals to remove, build within the Critical Root Zone, or eliminate 30% of the canopy
- Additional regulations apply for non-residential development (8-inch DBH)
- Main focus is to minimize impacts to the tree root system

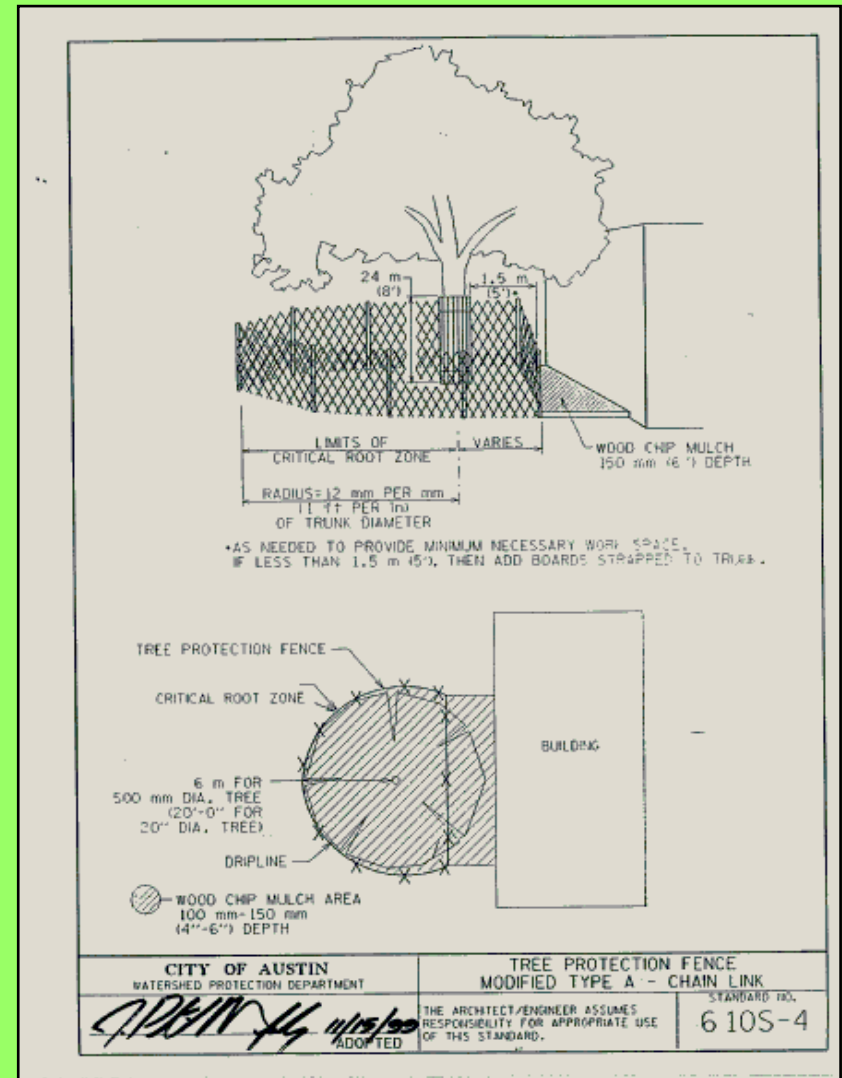
Measuring Diameter at Breast Height



Critical Root Zone & Tree Protection



- A 12-inch DBH tree has a Critical Root Zone (CRZ) of 12 feet from the tree; identified by a 24-foot diameter circle on proposals
- Ordinance protects 50% of the CRZ and the inner $\frac{1}{2}$ CRZ



Development Proposal & Review

GENERAL NOTES:

NO PORTION OF THIS SITE IS WITHIN THE 100 YEAR FLOODPLAIN AS PER FEMA FIRM PANEL 48453C0405 E DATED JUNE 16, 1995 FOR TRAVIS COUNTY TEXAS.
REFER TO SHEET C-2 FOR ALL OTHER CITY & TCED CONSTRUCTION NOTES.

ALL DETENTION BASINS, WATER QUALITY PONDS AND APPURTENANCES WHICH RECEIVE STORMWATER RUNOFF FROM COMMERCIAL OR MULTI-FAMILY DEVELOPMENT SHALL BE MAINTAINED BY THE RECORD OWNER IN ACCORDANCE WITH THE MAINTENANCE STANDARDS IN THE DRAINAGE AND ENVIRONMENTAL CRITERIA MANUALS.

WATERSHED STATUS--
THIS PROJECT IS LOCATED IN THE BOODY CREEK WATERSHED,
IS CLASSIFIED AS AN URBAN WATERSHED.

THIS PROJECT IS NOT LOCATED OVER THE EDWARDS AQUIFER RECHARGE ZONE.

OWNER INFORMATION

COLONNETTA FAMILY LIMITED PARTNERSHIP
P.O. BOX 214
BUDA, TEXAS 78810
(512) 496-5784 (OFFICE)
(512) 295-3450 (FAX)

DEVELOPER INFORMATION

COLONNETTA FAMILY LIMITED PARTNERSHIP
P.O. BOX 214
BUDA, TEXAS 78810
(512) 496-5784 (OFFICE)
(512) 295-3450 (FAX)

OWNER'S REPRESENTATIVE RESPONSIBLE FOR PLAN ALTERATIONS:

CIVIL ENGINEER:
AMC DESIGN GROUP INC.
P.O. BOX 18028
AUSTIN, TEXAS 78760
512-380-2811

SURVEYOR:
CARSON AND BUSH PROF. SURVEYORS, INC.
1904 FORTVIEW ROAD
AUSTIN, TEXAS 78704
512-443-0980 (OFFICE)
512-442-1084 (FAX)

LAND PLANNER:

THORNDYKE DESIGN
701 BRAZOS STE. 300A
AUSTIN, TEXAS 78701
512-476-4456

PERSON OR FIRM RESPONSIBLE FOR EROSION/SEDIMENTATION
CONTROL AND 90% MAINTENANCE:

CONTRACTOR

PERSON OR FIRM RESPONSIBLE FOR TREE/NATURAL AREA
PROTECTION MAINTENANCE:

CONTRACTOR

PLANNING COMMISSION CONSOLIDATED ADMINISTRATIVE SITE PLAN

PARKING IMPROVEMENTS FOR

AUSTIN, TX 78722

SPC-04-0016C

LEGAL DESCRIPTION:

LOT 5 & 1.8FT. OF LOT 6 BLK 15

OLT 46 DIV B JOHNS CR SUBD.

SITUATED IN TRAVIS COUNTY, TEXAS

LAND STATUS DETERMINATION # - 0211090403

C8i-04-0111

"USE" SITE: LOTS 1-9, BLK. 6

FOREST HILLS SUBDIVISION, BOOK 4, PAGE 78

SITUATED IN TRAVIS COUNTY, TEXAS.

APRIL 7, 2004



VICINITY MAP



ZONING MAP
N.T.S.

PROJECT SUMMARY

PROPOSED USE: OFF-SITE ACCESSORY PARKING
ZONING: "OS-MU-CO-10"
CONSTRUCTION LIMIT AREA: 0.24 ACRES
TOTAL SITE AREA: 0.228 ACRES
TOTAL ALLOWABLE IMPERVIOUS COVER: 90% OF 0.228 ACRES (ZONING AREA) = 0.218 ACRES
PITAL PROPOSED IMPERVIOUS COVER: 0.18 ACRES - 77.56% (ZONING AREA)

INDEX TO DRAWINGS	
SHEET 1 OF 11	C-1 COVER SHEET
SHEET 2 OF 11	C-2 CONSTRUCTION NOTES
SHEET 3 OF 11	C-3 EXISTING SITE PLAN
SHEET 4 OF 11	C-4 SITE PLAN & CALCULATIONS AND NOTES
SHEET 5 OF 11	C-5 LANDSCAPE PLAN
SHEET 6 OF 11	C-6 SITE DRAINAGE PLAN
SHEET 7 OF 11	C-7 SITE DRAINAGE PLAN I
SHEET 8 OF 11	C-8 EROSION & SEDIMENTATION CONTROL PLAN
SHEET 9 OF 11	C-9 CONSTRUCTION DETAILS
SHEET 10 OF 11	C-10 CONSTRUCTION DETAILS
SHEET 11 OF 11	C-11 EROSION/SEDIMENTATION CONTROL DET.

SUBMITTAL DATE: APR. 7, 2004

SUBMITTED FOR APPROVAL BY:

CHRIS MCCOMB, P.E. DATE

APPROVED BY:

N/A

INDUSTRIAL WASTE

N/A

TODOT

REVIEWED BY:

WATERSHED PROTECTION & DEVELOPMENT REVIEW DEPT.

SPC-04-0016C

SITE PLAN/DEVELOPMENT PERMIT NUMBER

N/A

CITY OF AUSTIN FIRE DEPARTMENT

N/A

TRAVIS COUNTY TRANS. & NATURAL RESOURCES

N/A

TRAVIS COUNTY PERMIT NO.

N/A

SUBDIVISION CASE NUMBER

CM-00-2261

ZONING CASE NUMBER

SP-85-007

SITE PLAN CASE NUMBERS

N/A

PRESSURE ZONE AREA

N/A

CITY OF AUSTIN WATER & WASTEWATER DEPT.

RELEASE OF THIS APPLICATION DOES NOT CONSTITUTE A WARRANTY OF ALL DATA, INFORMATION AND CALCULATIONS SUPPLIED BY APPLICANT. THE ENGINEER OF RECORD IS SOLELY RESPONSIBLE FOR THE COMPLETENESS, ACCURACY AND ADEQUACY OF HIS/HER WORK. WHETHER OR NOT THE APPLICATION IS REVIEWED FOR CODE BY CITY ENGINEERS.

REVISIONS / CORRECTIONS

No.	Description	Revised By	Revised Date	Drawn By	Drawn Date
1	Change of use from residential to commercial.	CH	4/7/04	CH	4/7/04

Tree Preservation & Protection

Mitigation Options

- Planting Replacement Trees
- Natural Area Preservation
- Tree Maintenance
- Special Construction Techniques
- Transplanting
- Tree Fund



Proposed developments are reviewed to assure that a final product is achieved which results in a diversified and sustainable urban forest.

Impacts & Tree Protection During Development

POTENTIAL IMPACTS

- Design placement of required roads, buildings, parking spaces, utility lines, detention ponds, etc.
- Development activities (demolition, grading, cut and fill, construction, spoil storage, landscaping)
- Maintenance of trees post-development



PROTECTIVE MEASURES

- 5-foot chain-link fence at dripline
- Prune limbs properly and cut roots cleanly
- 6 inches of mulch placed in high traffic areas under the dripline
- Strap 5-foot boards to tree trunk
- Additional feeding & watering of tree
- Requiring a private Certified Arborist to monitor tree impacts



Successes

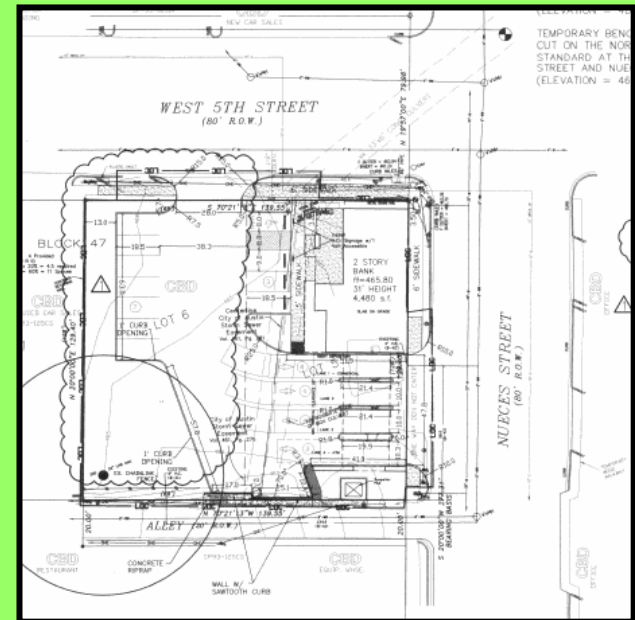
- Tree Preservation Promotion (i.e. enforcement, web site)
- Interacting with local Certified Arborists
- Street Tree Planting Programs

Landscape Ordinances

Austin Community Trees

NeighborWoods

Great Streets



CHALLENGES

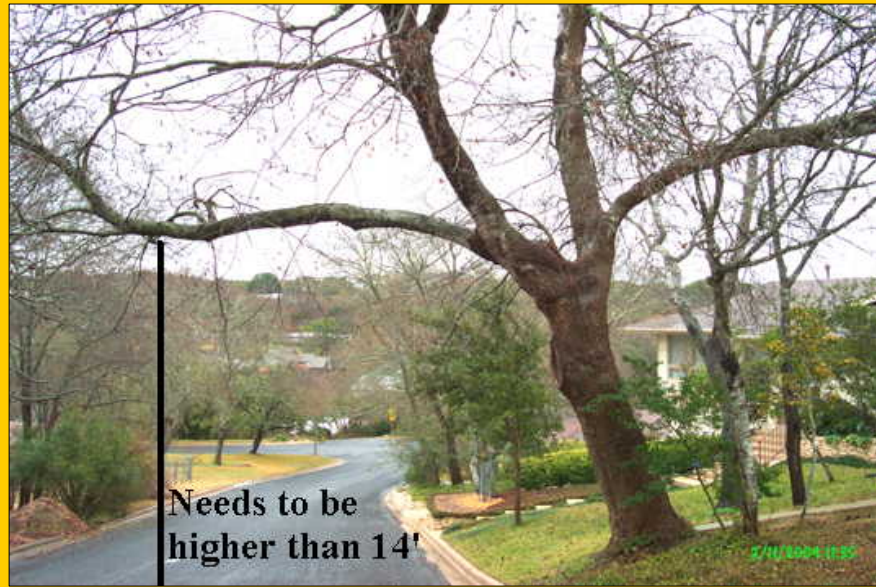
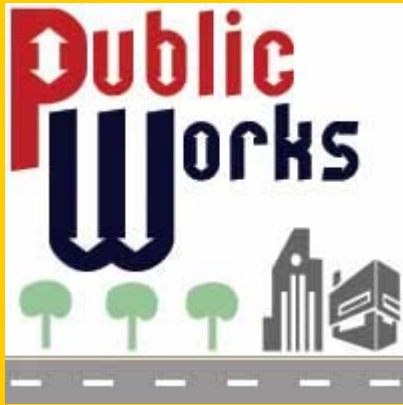


Limited Resources

Tree Coordination Efforts

Tree Coordination Efforts

NEIGHBORHOOD PLANNING & ZONING	ECONOMIC GROWTH & REDEVELOPMENT SERVICES	WATERSHED PROTECTION & DEVELOPMENT REVIEW	PARKS & RECREATION	SOLID WASTE SERVICES	PUBLIC WORKS	FIRE	AUSTIN WATER UTILITY	AUSTIN ENERGY
GREAT STREETS	DOWNTOWN REDEVELOPMENT	CITY ARBORIST PROGRAM	ROW MAINTENANCE	LARGE BRUSH & YARD TRIMMINGS PICK-UP	CAPITAL IMPROVEMENT PROJECTS	DEVELOPMENT REVIEW	CLEAN WATER PROGRAM	GREEN BUILDING
NEIGHBORHOOD PLANNING & ZONING	BIG BOX RETAIL	ENVIRONMENTAL REVIEW	PRESERVES	DILLO DIRT	SUBDIVISION INFRASTRUCTURE CONSTRUCTION	WILDLAND FIRE INTERFACE	DILLO DIRT	TREE PLANTING
GIS/DATA ANALYSIS	ROBERT MUELLER AIRPORT REDEVELOPMENT	ENVIRONMENTAL INSPECTION	TREE PLANTING	CODE COMPLIANCE	ROAD IMPROVEMENTS		WILDLAND CONSERVATION	URBAN HEAT ISLAND
LONG RANGE TRANSPORTATION	SECOND STREET RETAIL	STREAM RESTORATION	TREATY OAK PROJECT		INSPECTION		WATER CONSERVATION	CYCLE PRUNING
URBAN DESIGN	SMALL BUSINESS DEVELOPMENT	LANDSCAPE INSPECTION	CHRISTMAS TREE RECYCLING					
ANNEXATION		CREEK MAINTENANCE	MAINTENANCE & PARK AND TRAIL PLANNING					
AUSTIN COMMUNITREES		GROW GREEN						
		FLOOD CONTROL						
		GENERAL PERMITS						
		OAK WILT PROGRAM						
		MASTER PLAN						
		METEOROLOGICAL PREPAREDNESS AND RESPONSE						



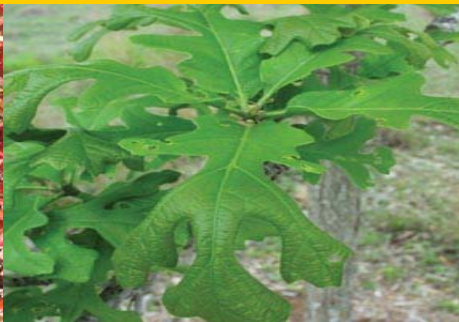
Parks & Recreation Department



Tree Planting
Tree Planting



Park Maintenance





grow green

- Our Message
- Partners ▶
- Plants ▶
- Gardening Basics ▶
- Insects, Pests, Diseases ▶
- Science and Research ▶
- Related Programs and Resources
- Home



Landscaping for Clean Water

**Watershed Protection
Development Review**



WATER CONSERVATION

- Home
- Do I Qualify?
- Rebates
- Toilet Replacement
- WashWise Rebates
- Outdoor Programs
- Commercial Programs
- Education & Publications
- More Water-Saving Info
- Special Offers



Questions about Water & Wastewater service?



Looking for Weatherization or Energy-Saving programs?
Visit austinenrgy.com
or call 974-7827.

SUBSCRIBE
to the
WATERWISE
NEWSLETTER

Get your
FREE
FLAPPERLESS
toilet today!



- UPDATE**
- Green Garden Homeowner Training scheduled for January 28, 2006 -- only \$10! Register today at 974-2550.
 - Now, even more toilets are eligible for the Toilet Rebate Program! [Click here for a complete list of eligible toilets, with pictures.](#)
 - The Next Rainbarrel Sale will be held on Saturday, February 11 from 9am to noon.



the Sustainability series

Join us for this series of FREE seminars on landscaping, recycling, energy and water conservation!



SUMMARY

- Tree Ordinance Exist!
- Promotion vs. Limited Resources
- Balance Between Tree Removal, Preservation, and Replanting

Michael Embesi
City of Austin
974-1876